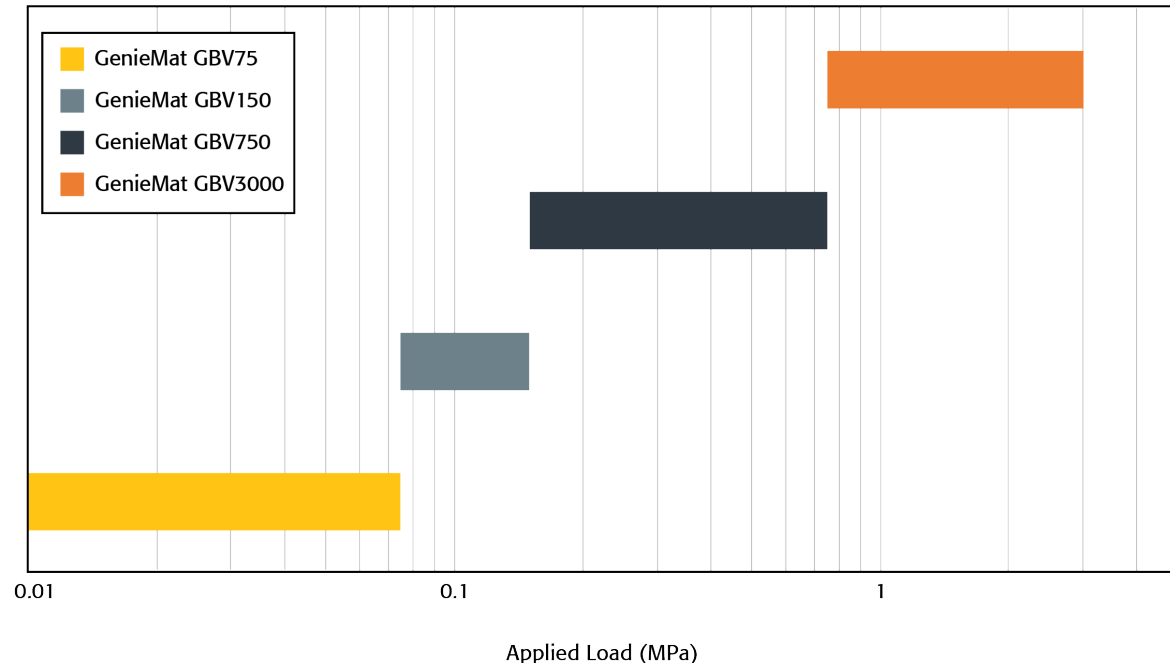


# GENIEMAT<sup>®</sup> GBV750

## Ground-Borne Vibration Isolation



### PRODUCT RANGE



### PRODUCT SPECIFICATIONS

<b>PRODUCT NAME</b>	GenieMat GBV750
<b>DESCRIPTION</b>	Dynamically soft rebonded-rubber material capable of withstanding high loads. Used when superior lateral vibration decoupling is required for building isolation.
<b>APPLICATION</b>	Suitable for loads up to 750 kPa
<b>FEATURES &amp; BENEFITS</b>	<ul style="list-style-type: none"> <li>• Dynamically soft for excellent vibration isolation</li> <li>• Mold, bacteria, fungi, and water resistant</li> <li>• No potential mold -producing fiberglass</li> <li>• Will not break down or move under load</li> <li>• Easy to install</li> </ul>
<b>THICKNESS</b>	50 mm (2")
<b>DIMENSION</b>	Sheets: 305 mm x 1220 mm (12" x 48")
<b>SHEET AREA</b>	0.37 m <sup>2</sup> (4 ft <sup>2</sup> )
<b>LEAD TIME</b>	4 weeks after receipt of order

CONTACT US | For Your Project Specific Questions  
 T. 416.449.0049 | E. info@pliteq.com | www.pliteq.com  
 © Pliteq Inc. 2021.

™ Trademarks of Pliteq Inc. The information provided is accurate to the best of our knowledge at the time of issue. However, we reserve the right to make changes when necessary without further notification. Suggested applications may need to be modified to conform with local building codes and conditions. We cannot accept responsibility for products that are not used, or installed, to our specifications. All listed dimensions are nominal.

[www.pliteq.com](http://www.pliteq.com)

# GENIEMAT<sup>®</sup> GBV750

## Ground-Borne Vibration Isolation



### TECHNICAL DATA

<b>OPERATING LOAD LIMIT</b>	750 kPa
<b>PEAK LOAD LIMIT</b>	3 MPa
<b>CREEP RATE</b>	1.0% per decade
<b>MECHANICAL LOSS FACTOR</b>	0.14*
<b>TEMPERATURE STABILITY</b>	-40°C to +80°C (-40°F to +176°F)
<b>THERMAL CONDUCTIVITY</b>	0.13 W/m °C
<b>R-VALUE @ 2"</b>	2.1 ft <sup>2</sup> h °F/Btu

### OPERATING LOAD DATA      0.5 MPa LOADING

<b>NATURAL FREQUENCY</b>	11 Hz
<b>40 Hz DYNAMIC MODULUS</b>	13.6 MPa

\* Load and frequency dependent

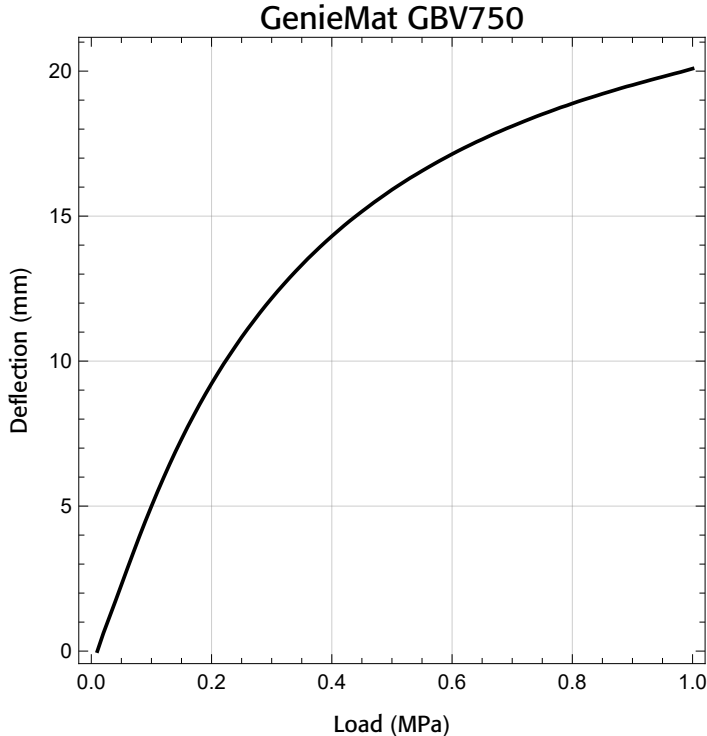
CONTACT US | For Your Project Specific Questions  
T. 416.449.0049 | E. [info@pliteq.com](mailto:info@pliteq.com) | [www.pliteq.com](http://www.pliteq.com)  
© Pliteq Inc. 2021.

®™ Trademarks of Pliteq Inc. The information provided is accurate to the best of our knowledge at the time of issue. However, we reserve the right to make changes when necessary without further notification. Suggested applications may need to be modified to conform with local building codes and conditions. We cannot accept responsibility for products that are not used, or installed, to our specifications. All listed dimensions are nominal.

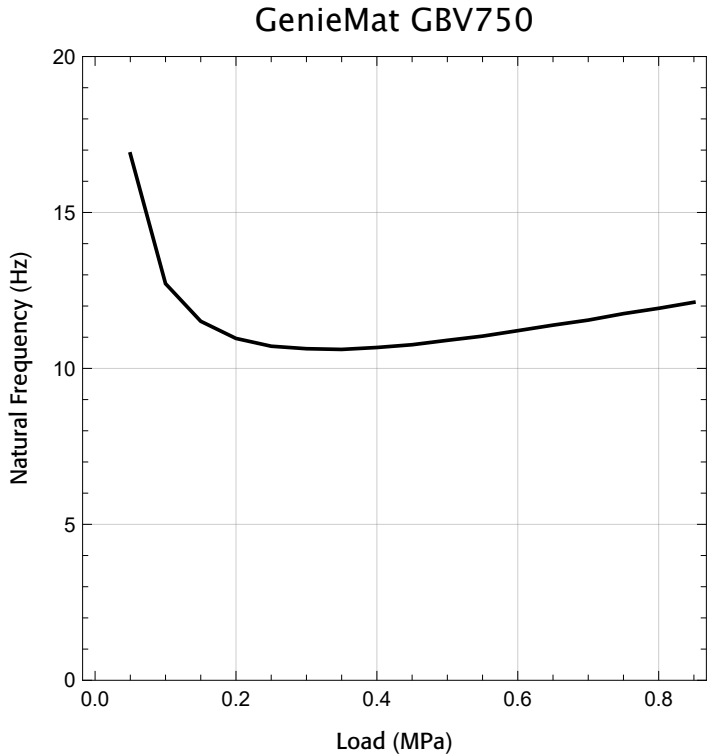
[www.pliteq.com](http://www.pliteq.com)

# GENIEMAT® GBV750

## Ground-Borne Vibration Isolation



Applied Load vs Deflection



Applied Load vs Natural Frequency

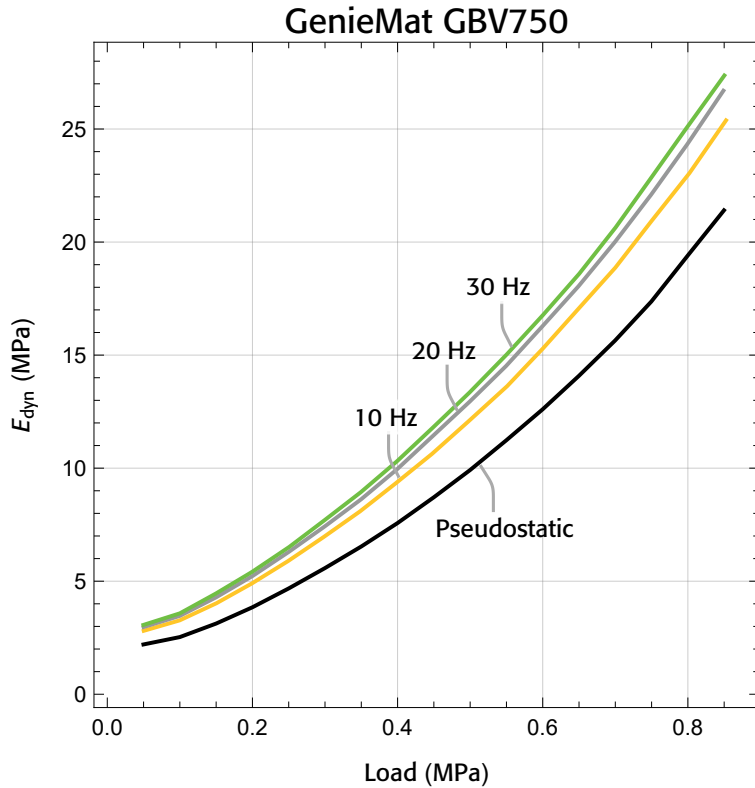
CONTACT US | For Your Project Specific Questions  
T. 416.449.0049 | E. info@pliteq.com | www.pliteq.com  
© Pliteq Inc. 2021.

®™ Trademarks of Pliteq Inc. The information provided is accurate to the best of our knowledge at the time of issue. However, we reserve the right to make changes when necessary without further notification. Suggested applications may need to be modified to conform with local building codes and conditions. We cannot accept responsibility for products that are not used, or installed, to our specifications. All listed dimensions are nominal.

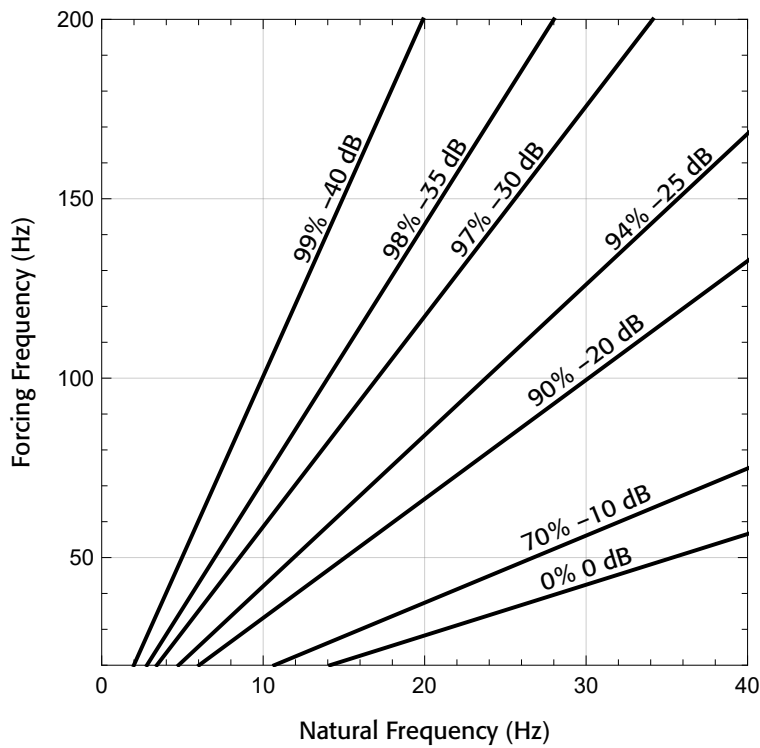
[www.pliteq.com](http://www.pliteq.com)

# GENIEMAT<sup>®</sup> GBV750

## Ground-Borne Vibration Isolation



Applied Load vs Dynamic Modulus



Isolation Efficiency

CONTACT US | For Your Project Specific Questions  
 T. 416.449.0049 | E. info@pliteq.com | www.pliteq.com  
 © Pliteq Inc. 2021.

®™ Trademarks of Pliteq Inc. The information provided is accurate to the best of our knowledge at the time of issue. However, we reserve the right to make changes when necessary without further notification. Suggested applications may need to be modified to conform with local building codes and conditions. We cannot accept responsibility for products that are not used, or installed, to our specifications. All listed dimensions are nominal.

[www.pliteq.com](http://www.pliteq.com)



# AROUND THE WORLD.

## CONTACT US

### PLITEQ NORTH AMERICA

131 Royal Group Crescent  
Vaughan, ON  
L4H 1X9 Canada

T. + 1 416 449 0049

[info@pliteq.com](mailto:info@pliteq.com)  
[www.pliteq.com](http://www.pliteq.com)

### PLITEQ UK

Irongate House  
22-30 Dukes Place  
London  
EC3A 7LP

T. + 44 203 9846444

[info@pliteq.co.uk](mailto:info@pliteq.co.uk)  
[www.pliteq.co.uk](http://www.pliteq.co.uk)

### PLITEQ MIDDLE EAST

European Business Centre  
Dubai Investment Park  
PO Box 473 512  
Dubai, UAE

T: +971 4 567 4944

[info@pliteq.ae](mailto:info@pliteq.ae)  
[www.pliteq.ae](http://www.pliteq.ae)

### PLITEQ ASIA PACIFIC

101 Cecil Street #19-13  
Tong Eng Building Singapore  
069533

T. +65 8452 6865

[info@pliteq.sg](mailto:info@pliteq.sg)  
[www.pliteq.sg](http://www.pliteq.sg)



© Pliteq Inc.

®™ Trademarks of Pliteq Inc. The information provided is accurate to the best of our knowledge at the time of issue. However, we reserve the right to make changes when necessary without further notification. Suggested application may need to be modified to conform with local building codes and conditions. We cannot accept responsibility for products that are not used, or installed, to our specifications. All listed dimensions are nominal.