

GENIEMAT[®] DM

GROUND-BORNE VIBRATION
ISOLATION FOR BUILDINGS



GENIEMAT[®] DM

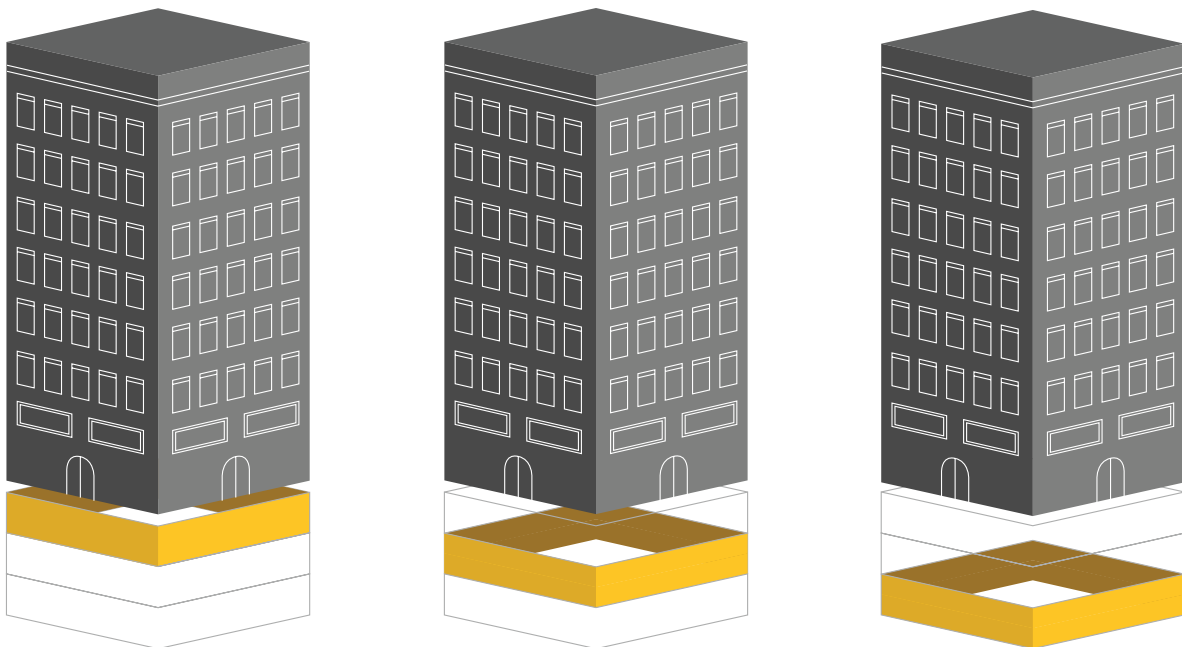
Ground-borne Vibration Isolation for Buildings

Lateral vibration decoupling pad to be used at the caisson wall for building isolation.

Dynamically soft rebonded-rubber material capable of withstanding high loads. Used when superior lateral vibration decoupling is required for building isolation.

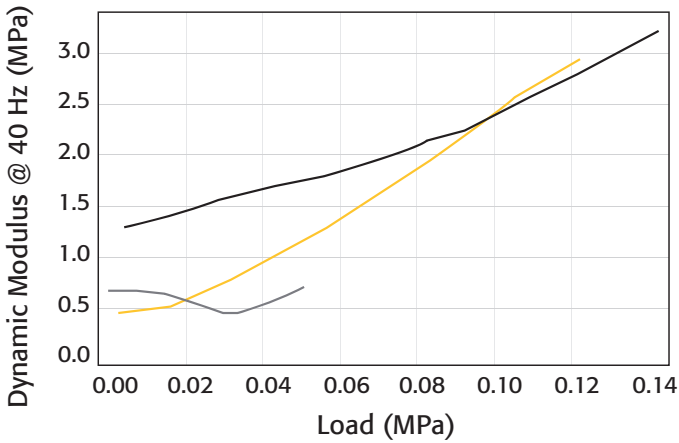
Features and Benefits:

- Dynamically soft for excellent vibration isolation
- Mold, bacteria, fungi, and water resistant
- No potential mold-producing fiberglass
- Will not break down or move under load
- Easy to install



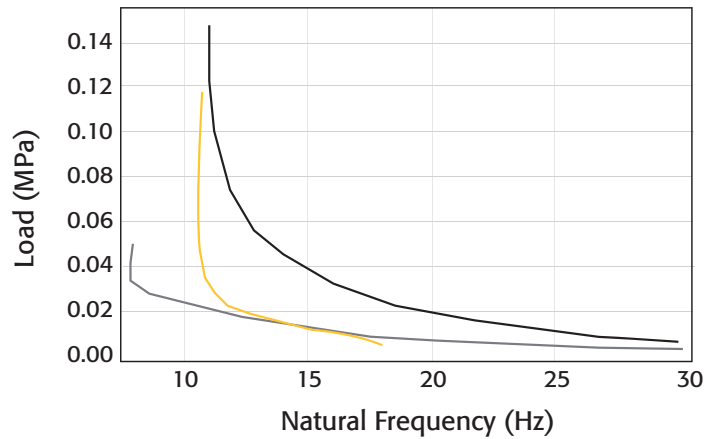
CAISSON WALL VIBRATION ISOLATION

Modulus of Elasticity



- GenieMat® DM32
- GenieMat DM22
- GenieMat LDM5

Natural Frequency



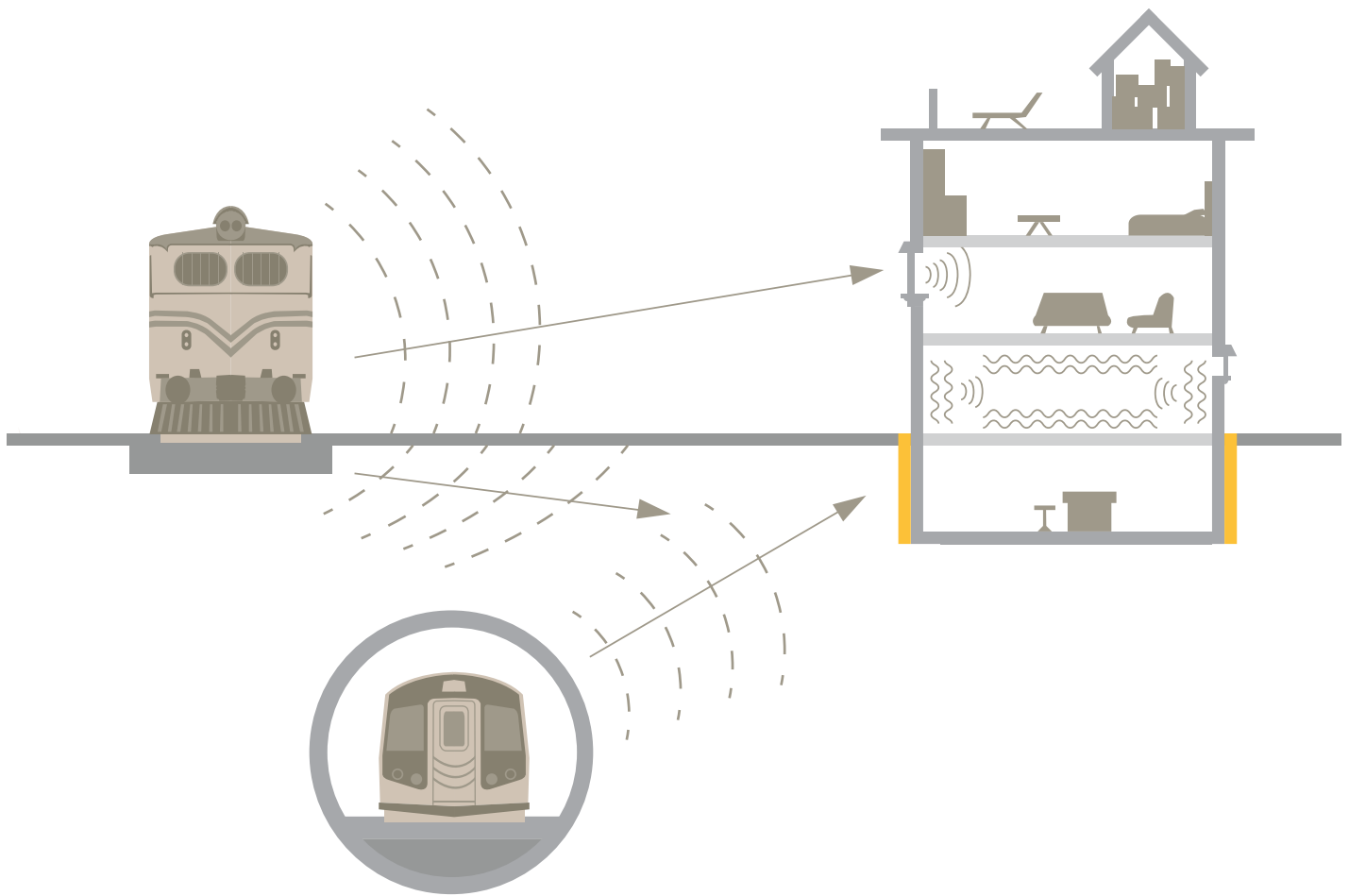
- GenieMat DM32
- GenieMat DM22
- GenieMat LDM5

	Design Parameters		
	GenieMat DM32	GenieMat DM22	GenieMat LDM5
STATIC LOAD LIMIT	350 kPa	300 kPa	26 kPa
PEAK LOAD LIIMT	450 kPa	400 kPa	1.0 MPa
CREEP RATE (% DEFLECTION/ DECADE)	1.0%	0.7%	1.1%
NATURAL FREQUENCY AT DESIGN LOAD	11.5 Hz	11 Hz	8 Hz
40 Hz DYNAMIC MODULUS AT DESIGN LOAD	3.2 MPa @ 0.14 MPa Load	2.2 MPa @ 0.08 MPa Load	0.55 MPa @ 0.04 MPa Load

CAISSON WALL VIBRATION ISOLATION

As the demand for development of land near major sources of vibration increases, lateral vibration isolation is becoming a more and more common practice. The ideal vibration isolation material behaves with a low dynamic stiffness in the dominant source frequency range, while maintaining the capacity to withstand the hydrostatic loads associated with the application.

For low to moderate loads, the viscoelastic nature of a rubber-matrix based material proves an exceptionally flexible solution. With the ability to engineer material properties by adjusting density, particle size distribution, and geometry; the **GenieMat® DM** and series of products can be selected to meet each projects specific requirements.



CONTACT US

For Your Project Specific Questions
T. 416.449.0049 | E. cbradley@pliteq.com

© Pliteq Inc. 2019.

06/19 [®] Trademarks of Pliteq Inc. The information provided is accurate to the best of our knowledge at the time of issue. However, we reserve the right to make changes when necessary without further notification. Suggested application may need to be modified to conform with local building codes and conditions. We cannot accept responsibility for products that are not used, or installed, to our specifications. All listed dimensions are nominal.



www.pliteq.com