



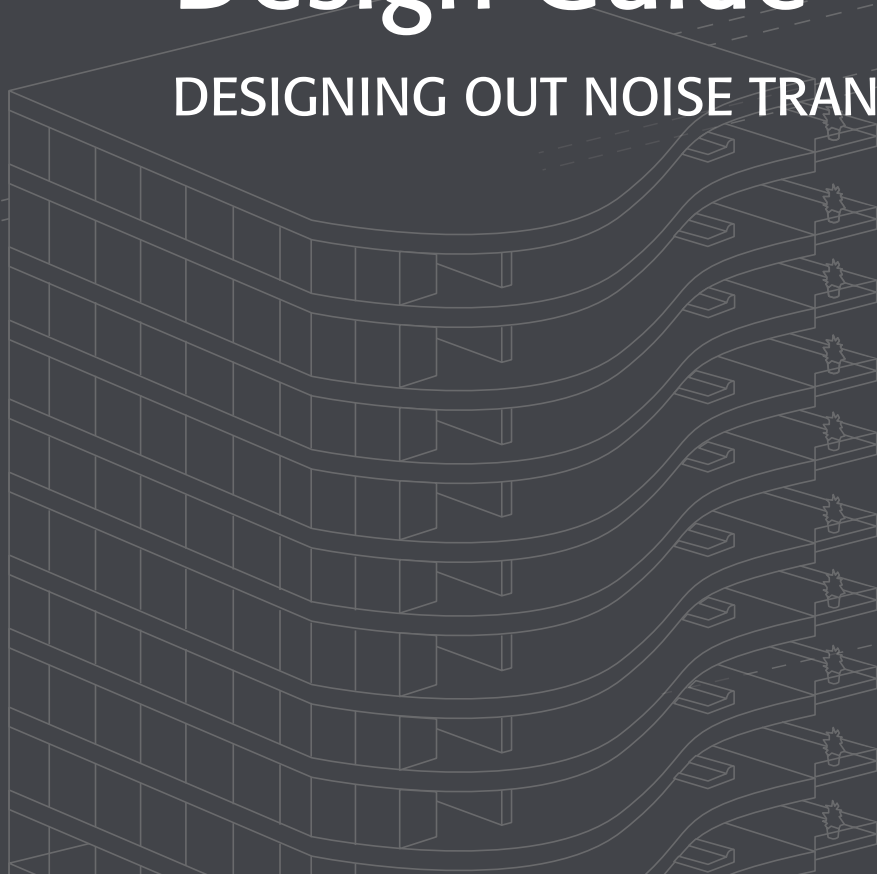
**PLITEQ**

It's not magic, it's engineering.



# Hoteliers Acoustic Design Guide

DESIGNING OUT NOISE TRANSFER IN HOTELS



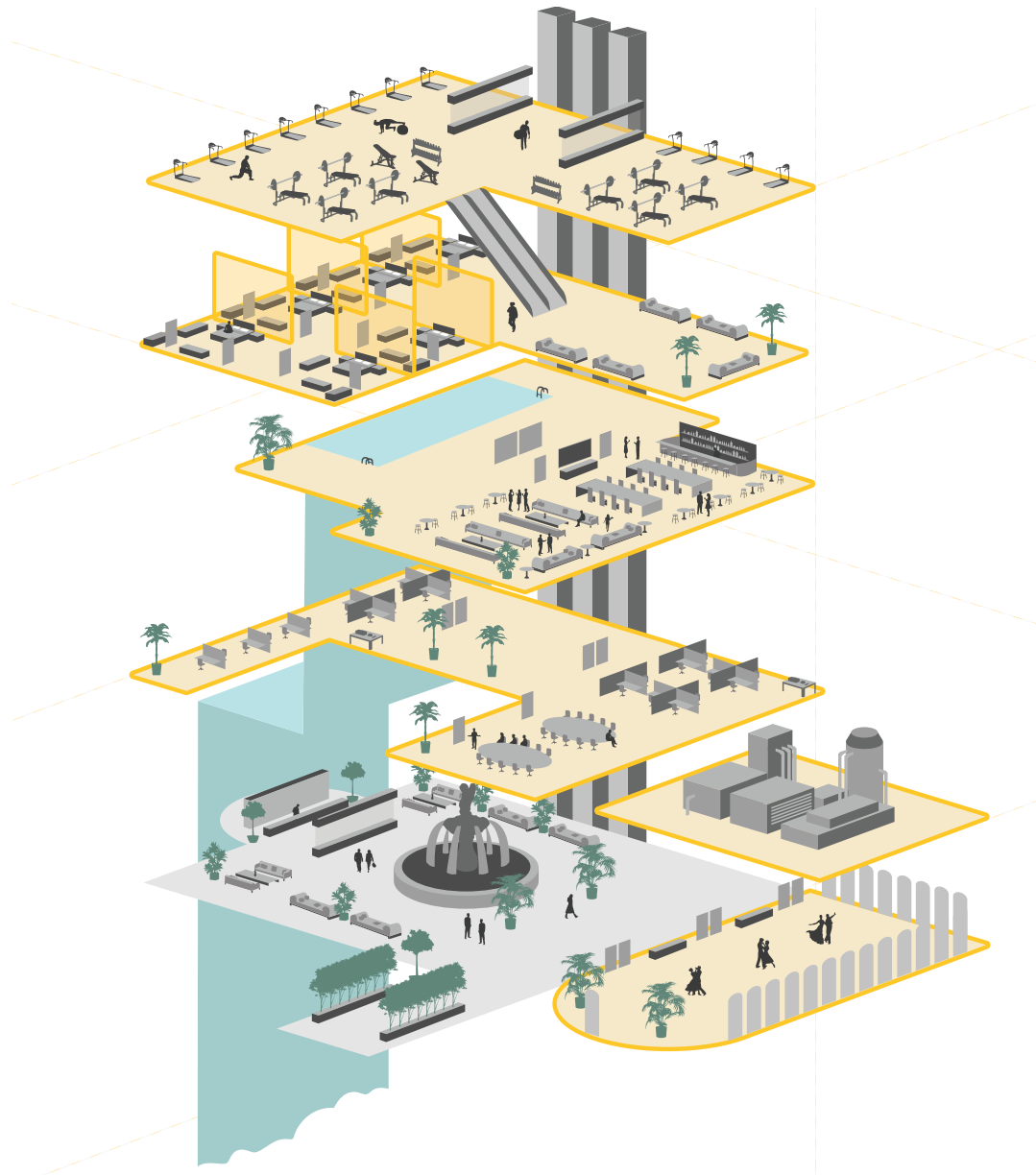


---

## WHAT DOES IT TAKE TO DESIGN EFFECTIVE ACOUSTICS IN HOTELS?

Stop noise at its source and improve customer experience through effective hotel acoustic design

This succinct guide arms hoteliers and developers with the key questions to ask during the design process and the products most suited to each source of noise.



## CONTENTS

---

**1** HOTEL GUEST  
FLOORS & WALLS

---

**2** GYM FLOORS

---

**3** FLOATING FLOORS

---

**4** CONFERENCE &  
SOCIAL SPACES



# 01 HOTEL GUEST FLOORS & WALL

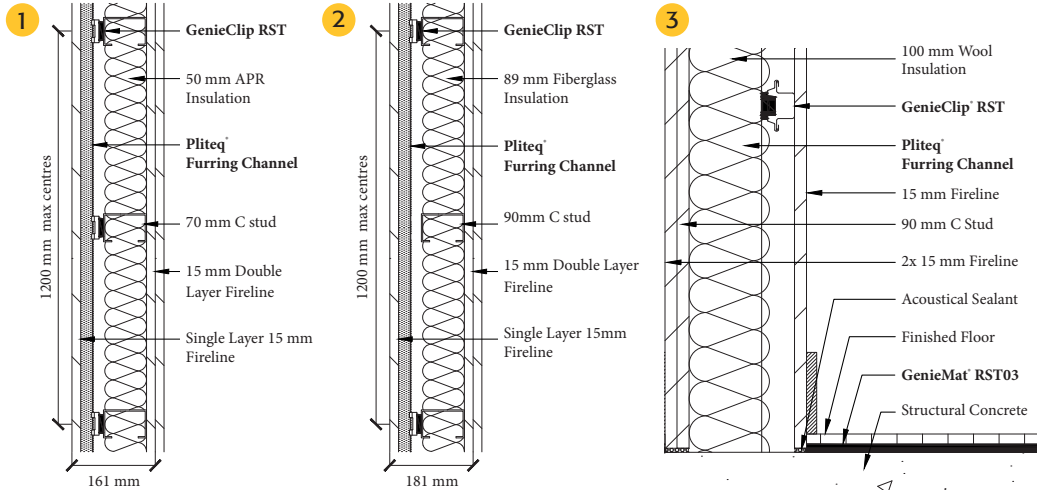
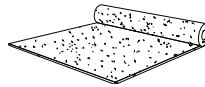
## WILL MY GUESTS BE ABLE TO HEAR THEIR NEIGHBOURS?

Guests staying in 3\* or a 5\* hotel will have a minimum expectation of the level of noise travelling from adjacent rooms and spaces into theirs. Other than noise from outside the hotel this will be the most obvious source of noise for your guests especially during the quieter morning, evening and night times.

A GENIECLIP® RST



B GENIEMAT® RST

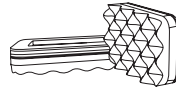


# 02 GYM FLOORS

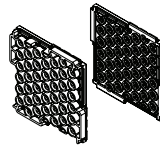
## REDUCING GYM NOISE IN HOTELS

Noise and vibration from gym activities can travel in all directions affecting rooms many storeys above or below especially in concrete buildings. The first option should always be to locate the gym away from noise sensitive areas. However with tight sites and a desire to offer guests premium facilities with good views this is not always possible. As such designing a gym flooring system using a combination of floating floors and/or heavy weight impact reduction floor finishes is essential.

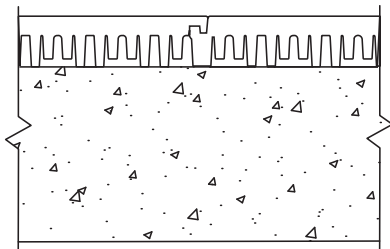
A GENIEMAT® TMIP



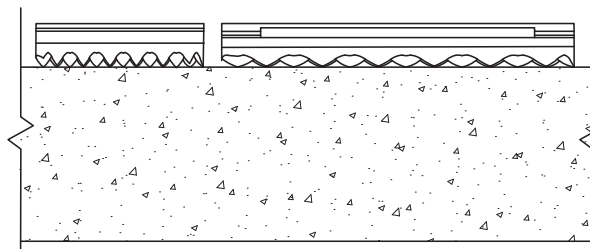
B GENIEMAT® FIT



1 GENIEMAT FIT



2 GENIEMAT TMIP



# 03 FLOATING FLOORS

## TYPICAL LOCATIONS:

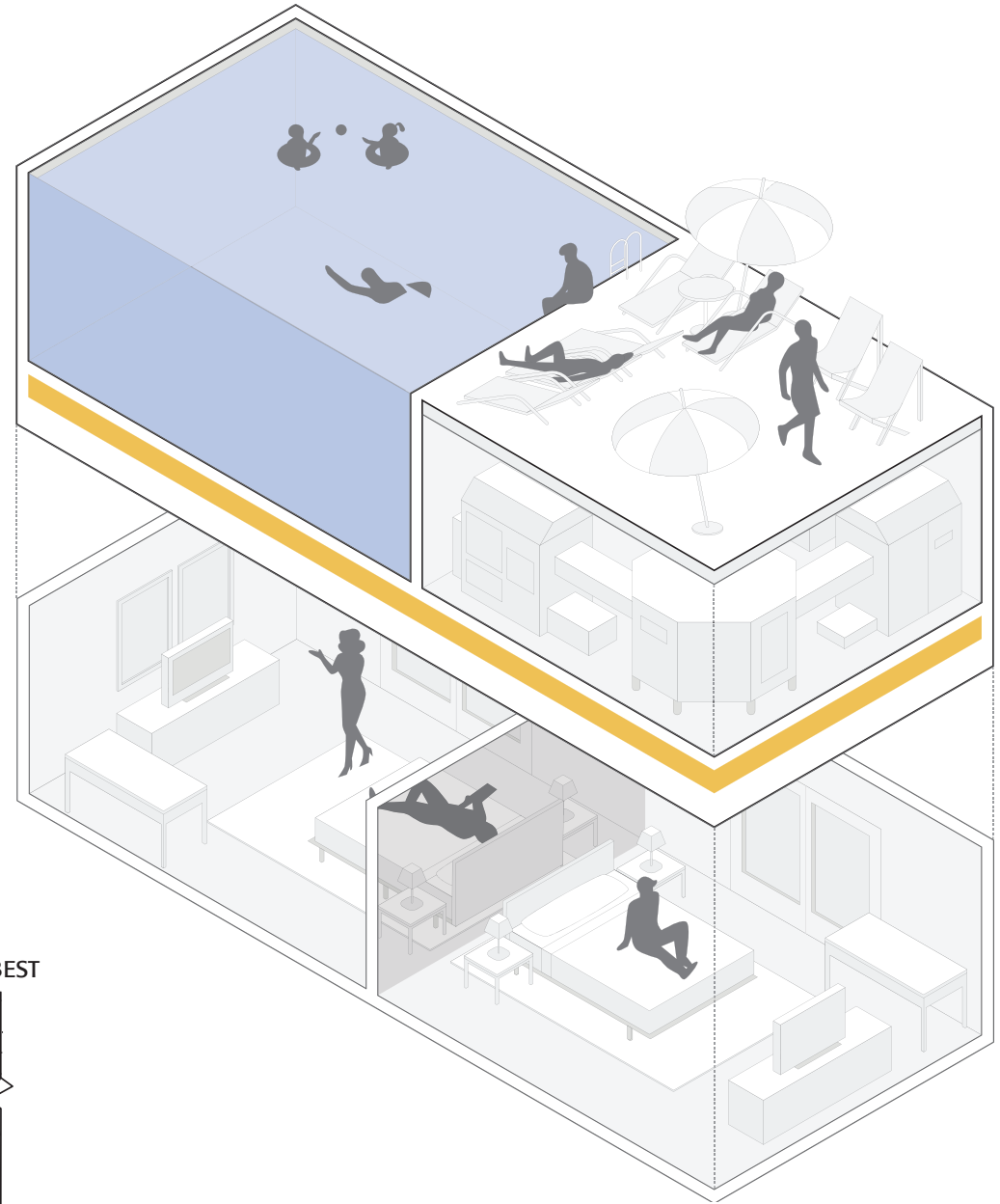
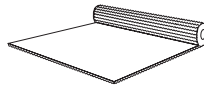
- Swimming pool
- Plant room
- Rooftop terrace

Reduces low frequency treadmill noise by 5-15 dB (between 20 - 80 Hz).

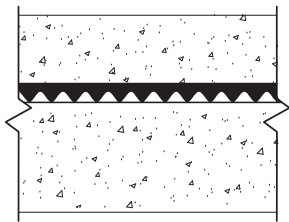
Adding GenieClip® LB to this system will increase the performance. Please contact Pliteq for additional details.

Dry systems instead of gypsum concrete are also available. Please contact Pliteq for additional details.

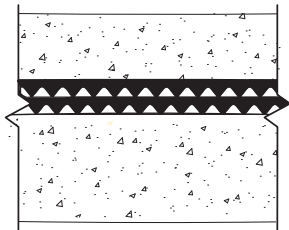
A GENIEMAT® FF



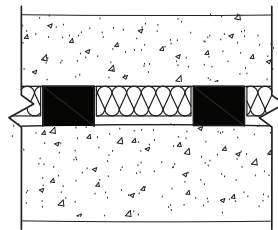
1 GENIEMAT FF25 - GOOD



2 GENIEMAT FF50 - BETTER



3 GENIEMAT FF70LDM - BEST

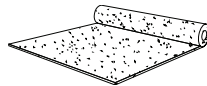


# 04 CONFERENCE & SOCIAL SPACES

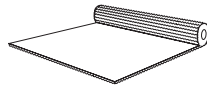
## REDUCING NOISE TRANSFER IN SOCIAL SPACES

Restaurants, bars, ballrooms and roof terraces are the social hubs of hotels and are densely trafficked areas which create significant impact and airborne noise. However this should not reduce design flexibility and demote these spaces to the lower floors. Introducing resilient elements beneath the floor finishes and resilient connections above the ceiling will allow hoteliers and designers the flexibility to locate these spaces at higher levels above guest rooms.

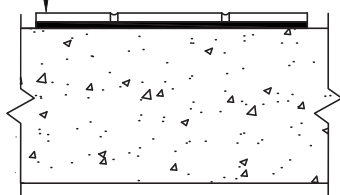
A GENIEMAT® RST



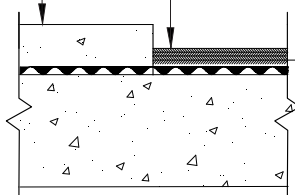
B GENIEMAT® FF



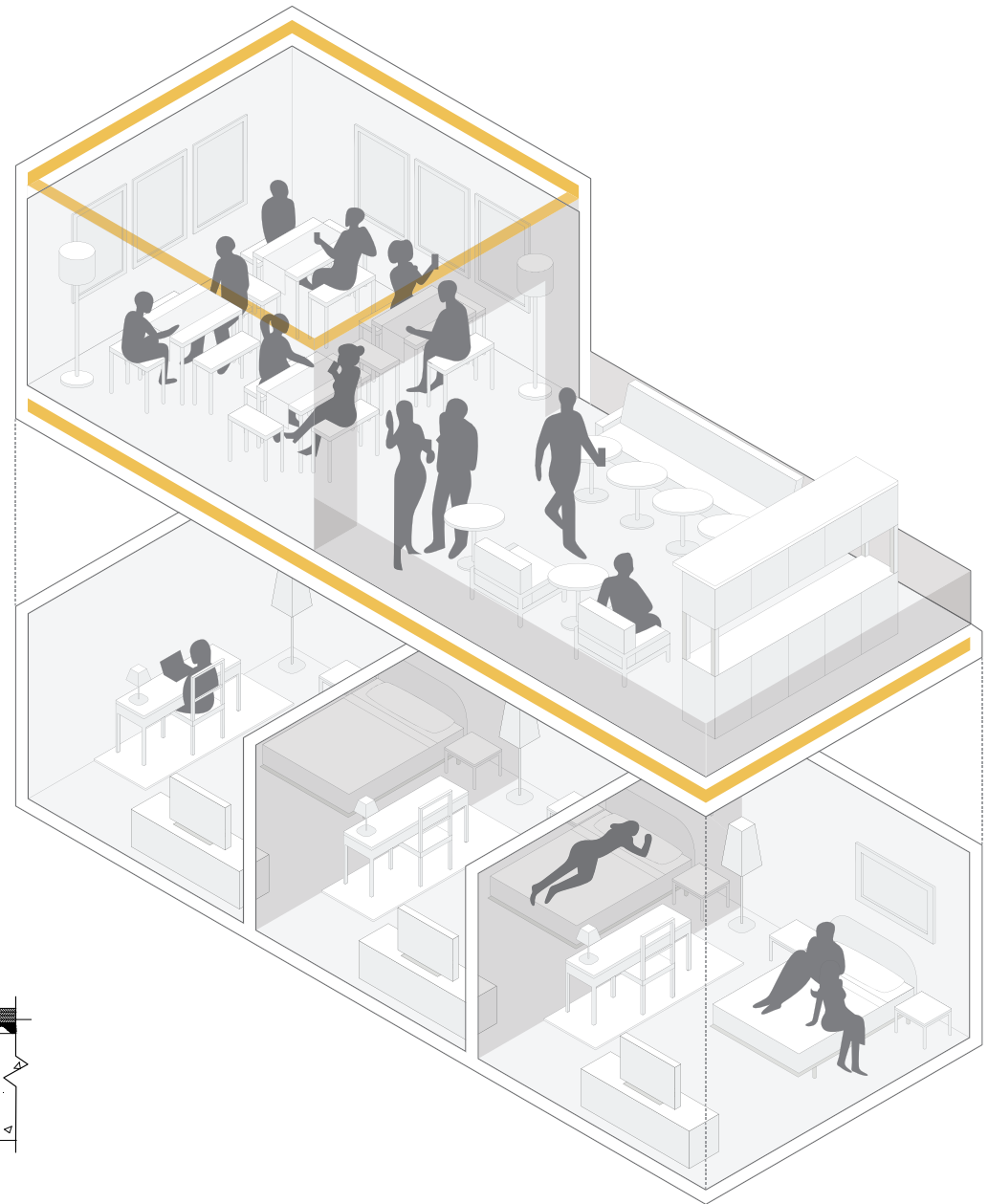
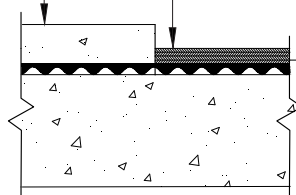
1 Floor Finish on GENIEMAT RST10 on Concrete Slab



2 Screed on GENIEMAT FF17 on Concrete Slab  
Plywood on GENIEMAT FF17 on Concrete Slab



3 Screed on GENIEMAT FF25 on Concrete Slab  
Plywood on GENIEMAT FF25 on Concrete Slab



# CONTACT US

**PLITEQ INC.**  
131 Royal Group Crescent  
Vaughan, ON  
L4H 1X9 Canada

E. [info@pliteq.com](mailto:info@pliteq.com)  
T. + 1 416 449 0049  
F. + 1 416 849 0415



© Pliteq Inc. 2021.

®™ Trademarks of Pliteq Inc. The information provided is accurate to the best of our knowledge at the time of issue. However, we reserve the right to make changes when necessary without further notification. Suggested application may need to be modified to conform with local building codes and conditions. We cannot accept responsibility for products that are not used, or installed, to our specifications. All listed dimensions are nominal.