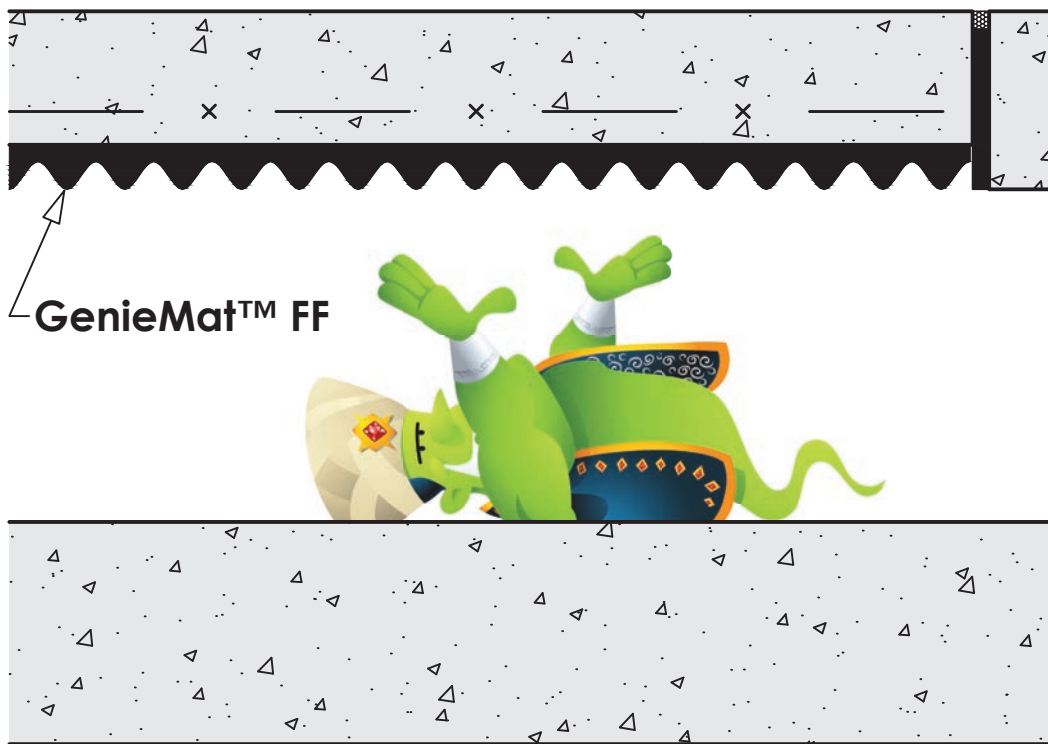




GENIEMAT™ FF

Airborne and Impact Isolation Subfloor Systems

- The next generation of floating subfloor
- A "green" product that dramatically reduces sound transmission



It's not magic, it's engineering.™



GenieMat™ FF

Airborne and Impact Isolation Subfloor Systems

Superior Performance Characteristics

GenieMat™ FF is made using compressible elastomer technology.

Compressible elastomers are a different technology than vulcanized rubber. The typical vulcanized natural or neoprene rubber is defined as incompressible. It requires a high load (mass) in order to obtain some deflection, and consequently increased vibration isolation. For buildings where load is not available or desirable, these systems simply do not perform well.

Compressible elastomer technology allows for low natural frequency at low loads.

Due to the low required load, the rubber can cover the entire floor surface, providing consistent performance throughout. Vulcanized rubber isolator systems require the isolator to be carefully located, and extra isolators may need to be used depending on weight and position of equipment. This requires additional layout and installation work, as well as expenses.

Using GenieMat™ FF, contractors simply need to roll-out the underlayment.

The roll-out nature of the rubber, combined with its consistent performance, means concrete can be poured directly on it. GenieMat™ FF is supplied with moisture barrier and there is no need for plywood formwork.

Disadvantages of Other Systems

Floating Wood/Formwork

- Requires intensive labor to cut wood to fit room contours
- Contains potential mold-producing fiberglass
- Custom point load isolators needed to support equipment and significant loads
- Vulcanized rubber requires high loads for optimal compression

Jack-Up/Lift-Slab

- Requires intensive labor to lift slab into final position
- Requires job-specific engineering to support specific building condition
- Substantial amounts of rebar is required to prevent cracking
- Custom point load isolators needed to support equipment and significant loads
- Vulcanized rubber requires high loads for optimal compression
- Can't be self-levelled

Installation is Easy



STEP 1

After installing perimeter isolation strips on the base of the walls, unroll GenieMat™ FF.



STEP 2

Duct tape all joints and seams, including between the perimeter isolation strips and the GenieMat™ FF.



STEP 3

Pour light-weight concrete 3/4" minimum, or pour full-weight concrete 1 1/2" minimum.



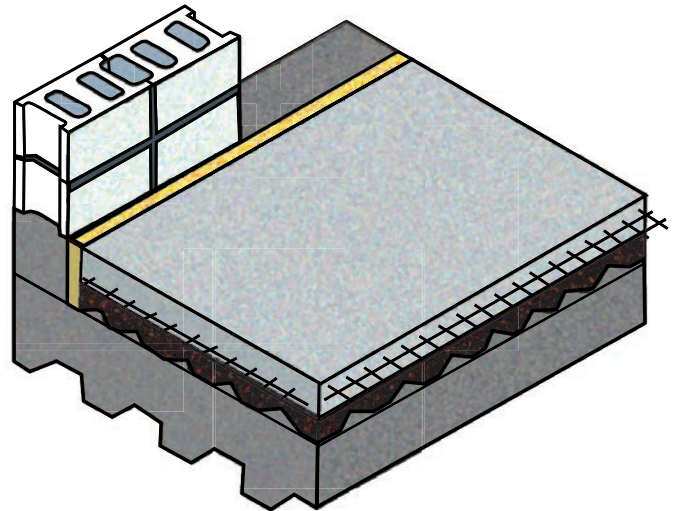
STEP 4

Prepare concrete surface for floor finish.

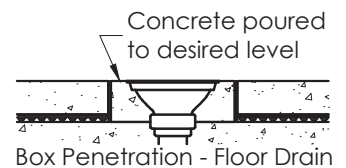
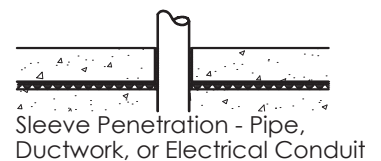
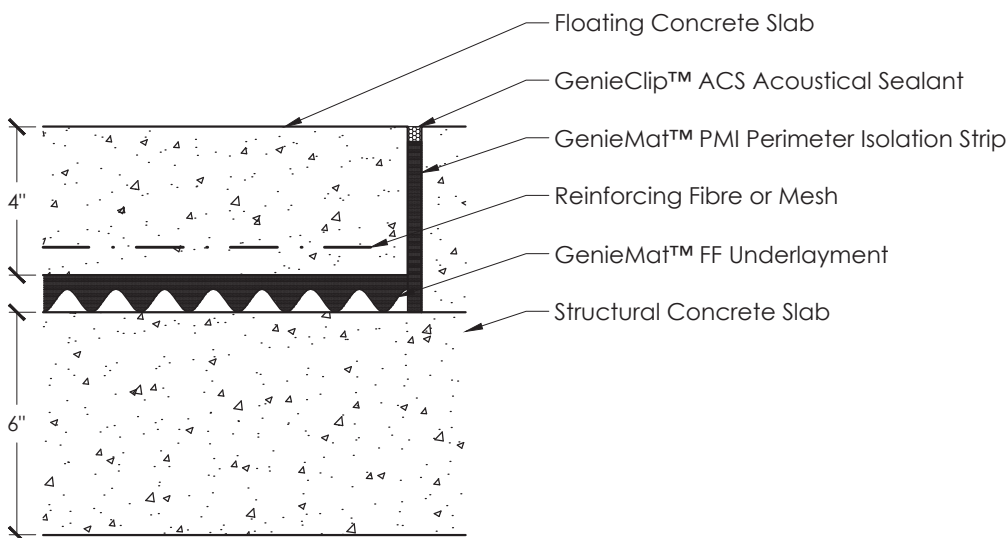
Welcome to the next generation of floating subfloor

Product Features

- Significantly increases IIC and STC ratings
- Achieves low natural frequency with low loads
- Can be safely loaded up to 1000 lb/ft²
- Composed of 92% recycled rubber content
- Qualifies for LEED® points
- Mold, bacteria, fungi, and water resistant
- Penetrations for pipes, ductwork, electrical conduits, and drains are possible
- Rolls out quickly and is easy to install without the need for adhesive
- Can be used directly under gypsum, light-weight, or full-weight concrete



Typical Details



**Above assembly with
GenieMat™ FF-25**



GenieMat™ FF Products

FF-06

Thickness: 6 mm (1/4")
Roll Dimension: 4 1/2' wide, 30' long
Roll Weight: 110 lbs (49.9 kg)
Roll Coverage: 135 ft²

FF-10

Thickness: 10 mm (3/8")
Roll Dimension: 4 1/2' wide, 30' long
Roll Weight: 190 lbs (86.2 kg)
Roll Coverage: 135 ft²

FF-17

Thickness: 17 mm (3/4")
Roll Dimension: 4 1/2' wide, 30' long
Roll Weight: 310 lbs (140.6 kg)
Roll Coverage: 135 ft²

FF-25

Thickness: 25 mm (1")
Roll Dimension: 4' wide, 15' long
Roll Weight: 180 lbs (81.6 kg)
Roll Coverage: 60 ft²

FF-50

Thickness: 50 mm (2")
Roll Dimension: 4' wide, 15' long
Roll Weight: 180 lbs (81.6 kg)
Roll Coverage: 30 ft²

Leadtime: 2-3 weeks after receipt of order

Technical Data

Tensile Strength (ASTM D412, Die C)	35 psi minimum
Elongation at Break (ASTM D412, Die C)	60 % minimum
Compressibility (ASTM F36)	@ 50 psi = 15 % / recovery 85 % minimum @ 100 psi = 20 % / recovery 85 % minimum
Type A Hardness (ASTM D2240)	30 durometer
TCNA Robinson Test (ASTM C627)	Light commercial with tile
Laboratory Impact Insulation Class (ASTM E492)	Specified floor-ceiling assembly must be tested in a NVLAP-certified laboratory and comply with ASTM standards.
Field Impact Insulation Class (ASTM E1007)	Specified floor-ceiling assembly must meet requirement as stated by building code and/or acoustical consultant.
Temperature Stability	-40°C to +115°C (~-40°F to +240°F)



GenieMat™ is a trademark of Pliteq Inc.
The information provided is accurate to the best of our knowledge at the time of printing.
However, we reserve the right to make changes when necessary without notification.



MIX
Paper from
responsible sources
FSC® C009968

