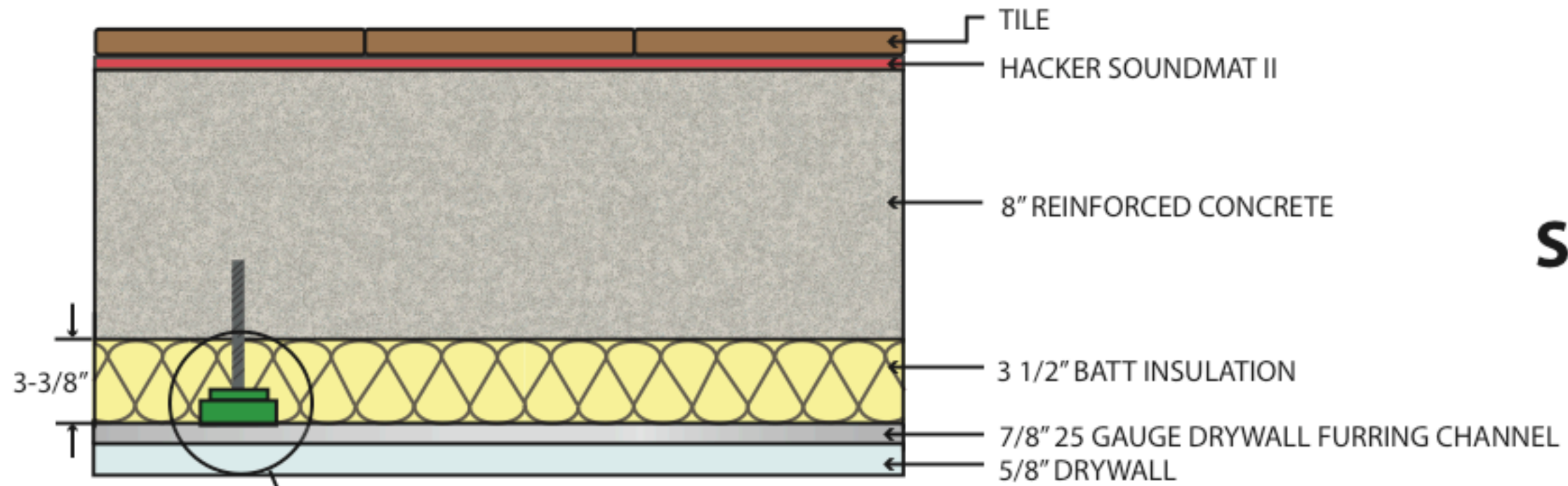


# CONCRETE FLOOR / CEILING ASSEMBLIES



**IIC 60**  
**STC 62**



**Pliteq GenieClip**  
(Suspended on anchor bolts)



DWG: PT029



www.pliteq.com  
T. 416.449.0049 F. 416.849.0415  
1370 Don Mills Road Unit 300, Toronto, ON M3B 3N7

CONCRETE FLOOR / CEILING ASSEMBLIES  
TEST NO. 5008035 / 7008086  
DATE: February 1st, 2009.